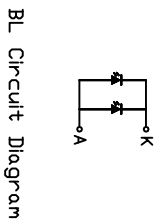
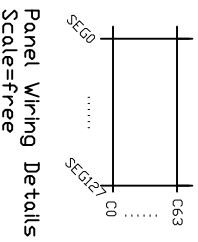
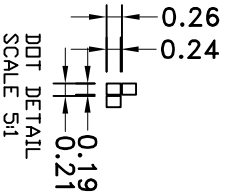


PIN	SYMBOL
1	NC
2	IRS
3	P/S
4	C86
5	VR
6	V5
7	V4
8	V3
9	V2
10	V1
11	CAP2+
12	CAP2-
13	CAP1-
14	CAP1+
15	CAP3-
16	VOUT
17	VSS
18	VDD
19	D7
20	D6
21	D5
22	D4
23	D3
24	D2
25	D1
26	D0
27	RD
28	WR
29	A0
30	/RES
31	/CS1
32	NC

**Specification:**

- 1). Driving: Duty: 1/65 , Bias: 1/9 , Vop: 9.0v
- 2). Viewing angle: 6.0'clock
- 3). Display mode: FSTN, Positive, Transflective
- 4). Operating temp: -10 to +60°C  
Storage temp: -20 to +70 °C
- 5). IC: ST7565P
- 6). Backlight: RED If=30mA Vf=2.1v Lv=100cd/m2 TYP  
 $\lambda_p = 620-630nm$



# HOT DISPLAY

Dwg Title HTG12864-9C

Dwg No.

Scale Unit mm Tol. ±0.3 Date 2012-10-19

Drawn LWEI Checked Approved